



# Ministry of Health Uganda

## Weekly Epidemiological Bulletin

### Highlights of the week

- Second new Ebola case in Sierra Leone

### Summary Table 1

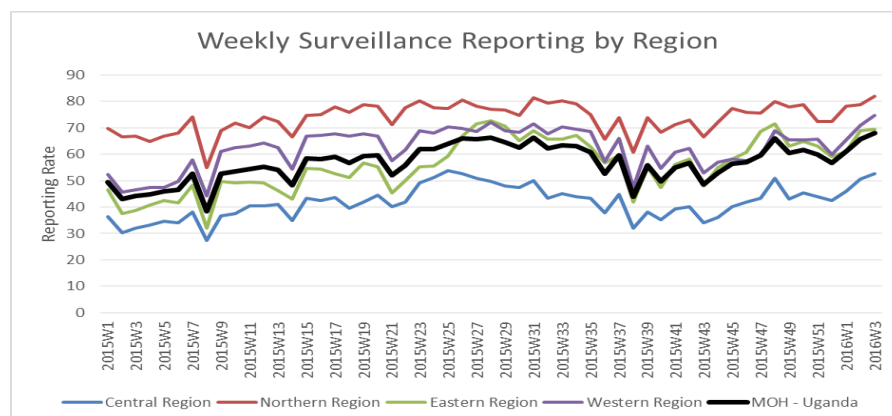
Indicator	Week 2 2016	Week 3 2016
% Districts	100	100
Ave % HU	73	75
% Timely reports	*	*
AFP	5(0)	6(0)
Animal bites	208(2)	256(1)
Cholera	36(2)	48(0)
Dysentery	909(1)	932(3)
Guinea Worm	0(0)	1(0)
Malaria	206,777 (43)	226,696 (64)
Measles	72(0)	92(0)
Meningitis	4(1)	4(1)
NNT	2(0)	2(1)
Plague	0(0)	0(0)
Typhoid	1679 (1)	1688(3)
MDR TB	13(0)	13(0)

\*Indicator not provided

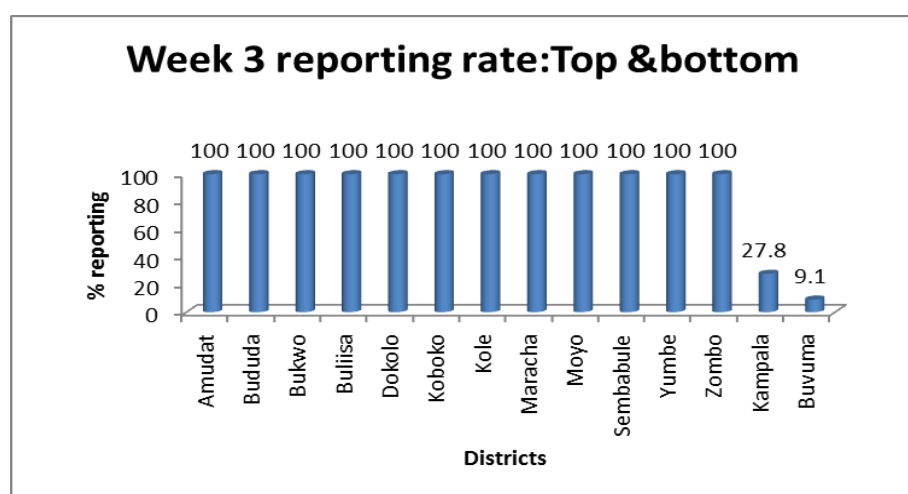
### Completeness of Reporting

All the 112 districts reported with average reporting rate of 75% in week 3 2016. 47 districts (42%) achieved the national target of  $\geq 80\%$  of the health facilities reporting. 12 districts had all their facilities reporting. Kampala and Buvuma districts have continued to have reporting rates of less than 30%. The regional level performance as well as best districts and worst districts in week3 have been presented in **Figures 1, 2 & 3**. As shown in Figure 3 the number of districts with low reporting rates are on the decline whereas the number of top performing districts are on the rise.

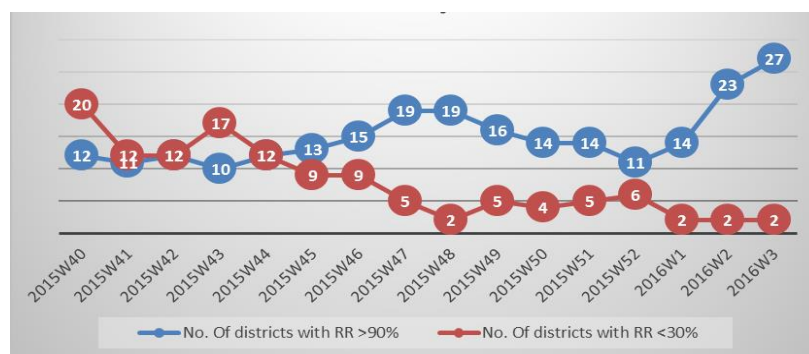
### Epidemiological Week 3 (11<sup>th</sup> - 17<sup>th</sup> January 2016)



**Figure 1: Average reporting level by region for weeks for Week 3 (11<sup>th</sup>-17<sup>th</sup>, Jan, 2016)**



**Figure 2: Top and Bottom districts reporting rates**



**Figure 3: Trends of top and bottom reporting rate districts**

### Disease outbreaks

**Cholera:** 48 cases of cholera were reported during this week: 42 cases in Mbale, 5 cases in Busia and 1 case in Hoima districts.

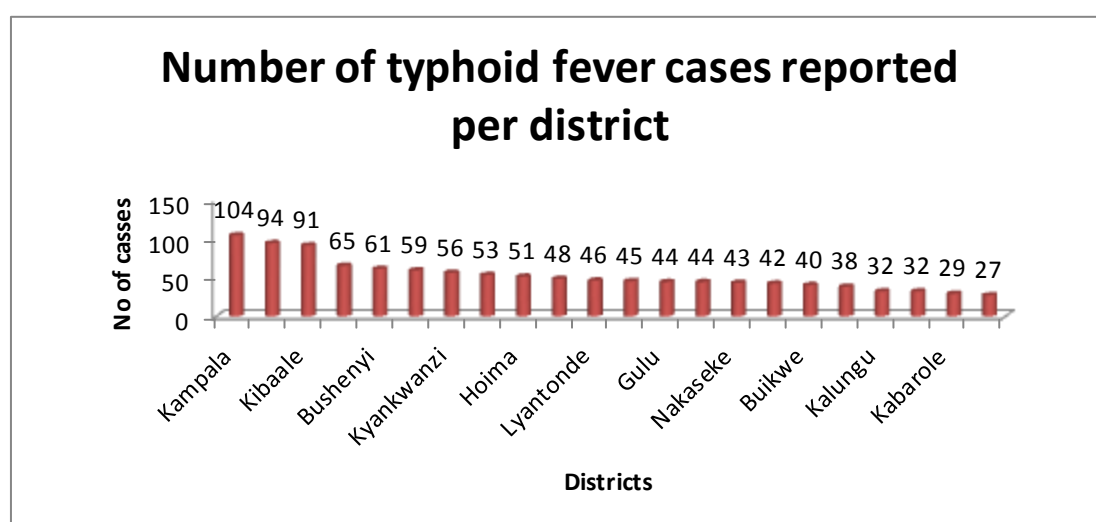
**Malaria:** Reported Malaria cases have remained high with a 9.6% increase from week 2 of 2016. The case fatality rate has also increased 0.03% as well.

The epidemic districts in Northern Uganda remains above the respective malaria normal channels. **Kasese, Nebbi and Adjumani districts** have consistently reported very high malaria cases of over 4000 since week 1 of 2016. Rakai district also reported over 4000 cases in this week. Among the districts with confirmed malaria upsurge in Northern Uganda, Gulu district has continued to report the highest number of cases, with one death reported in week 3 of 2016.

### **Other priority diseases**

**AFP:** Six (6) cases of AFP were reported from five districts of Butambala, Kumi, Kampala, Isingiro and Serere. There were no AFP related deaths reported in this week.

**Typhoid fever:** 1688 cases of typhoid were reported this week with 3 deaths. 21 districts reported more than 25 typhoid cases as shown in the graph below.



**Figure 4: Districts reporting more than 25 typhoid fever cases**

**Measles:** A total of 92 cases of measles were reported during this week with no death. The districts that reported measles cases above the outbreak threshold (5 or more cases) were four and these include; Kiboga (12 cases), Kibaale (7), Hoima (6) and Wakiso (6).

**Neonatal tetanus:** Two cases of neonatal tetanus were reported in Soroti and Lira districts with one death.

**Maternal and perinatal deaths:** A total of 21 maternal deaths were reported from sixteen (16) districts. Hoima regional referral hospital reported three maternal deaths this week as shown in Figure 5 below. All facilities submitted the maternal audit forms. Sixty six (66) cases of perinatal deaths were reported.

**Table 2: Health facilities reporting maternal deaths in week 3**

Region	District	Subcounty	Health Facility	Maternal Deaths
Western	Hoima	Kahoor Division	Hoima AL REF HOSPITAL	3
Central	Masaka	Nyendo-Senyange	St. Joseph Kitovu HOSPITAL	2
Western	Kabarole	South Division	Fort Portal al Referral Hospital	2
Central	Sembabule	Mateete Town Council	Bamu HOSPITAL	1
Central	Luwero	Luwero Town Council	Bishop Asili Ceaser HC IV	1
Central	Kampala	Rubaga Division	Mengo HOSPITAL	1
Central	Mpigi	Nkozi Subcounty	Nkozi HOSPITAL	1
Central	Sembabule	Mateete Town Council	Bamu HOSPITAL	1
Central	Luwero	Luwero Town Council	Bishop Asili Ceaser HC IV	1
Central	Kampala	Rubaga Division	Mengo HOSPITAL	1
Central	Mpigi	Nkozi Subcounty	Nkozi HOSPITAL	1
Northern	Kaabong	Karenga Subcounty	Karenga HC IV	1
Northern	Lira	Adyel Division	Lira AL REF HOSPITAL	1
Northern	Zombo	Warr Subcounty	Warr Agiermach HC III	1
Western	Kasese	Kisinga Subcounty	Kagando HOSPITAL	1

### International Health Events

#### Another Ebola case in Sierra Leone:

A contact to the recent Ebola case in Sierra Leone has been confirmed positive for Ebola virus. The 38 year old woman who nursed the recent case that died is currently on treatment. <http://www.timeslive.co.za/africa/2016/01/27/Three-injured-in-Sierra-Leone-Ebola-clashes>>

According to police sources, police fired tear gas on Tues 26 Jan 2016 to disperse youths protesting Ebola restrictions which have shut down market activity in the northern Kambia district of Sierra Leone. According to witnesses, 3 youths were seriously injured (1 shot in the head and another in the leg; all 3 were hospitalized) in altercations with police in Sierra Leone after authorities ordered village traders to close shops while they hunted for people who may have had contact with an Ebola virus disease (EVD) victim. Reports indicate angry youths allegedly burned down a police post in the northern village of Barmoi Luma, as police fired tear gas to disperse angry crowds.

#### MERS-CoV in Saudi Arabia:

As of 27 Jan 2016, there was a total of: 1288 laboratory-confirmed cases of MERS-CoV infection including 551 deaths [reported case fatality rate: 42.8 percent] 733 recoveries, and 4 currently active cases plus 3 asymptomatic cases. Only 1 new case in the past 24 hours. <http://www.moh.gov.sa/en/CCC/PressReleases/Pages/Statistics-2016-01-27-001.aspx>>

**Editorial:** Mr. J. Kissa, Dr C. Kihembo, J. Nguna, Dr. B. Masiira, , Dr. M. Musenero, Mr. M. Mugagga, Dr. J. Wamala, Dr. I. Makumbi , Dr. R. Musoke, Dr. J. Sekajugo, Dr. F. Adatu, Dr. C. Okot, Dr. M. Nanyunja, Dr. I. Nabukenya

**Founders:** Dr. J. Kamugisha (RIP), Dr. J. Wanyana, Dr. M. Lamunu, Dr. C. Mugero, Dr. N Ndayimirigye, Mr. L. Luswa (RIP), Dr. N. Bakyaaita, Mr. M. Mugagga

For comments please contact: The Epidemiological Surveillance Division- M.O.H; P.O BOX 7272 Kampala, Tel: 0414-340874/0414-345108;  
Email: [esd@health.go.ug](mailto:esd@health.go.ug) or [esduganda@yahoo.co.uk](mailto:esduganda@yahoo.co.uk)

**Summary table for epidemiological reports received for Week 3, (11<sup>th</sup> -17<sup>th</sup> January 2016)**  
(Numbers in brackets indicate deaths)

District	HMIS 033b % H/U	Malaria Cases	Dysentery Cases	AFP	Animal Bites	Bacterial Meningitis	Cholera	Guinea Worm	Measles Cases	IN NT	Plague	Typhoid Fever	Yellow Fever	Presumptive(MDR)TB Cases
Abim	85	536	10	0	0	0	0	0	0	0	0	3	0	0
Adjumani	94.3	4972(2)	39	0	1	0	0	0	0	0	0	0	0	0
Agago	93.9	3334	48	0	2	0	0	0	0	0	0	3	0	0
Alebtong	88.9	554	4	0	1	0	0	0	0	0	0	0	0	0
Amolatar	92.3	450	0	0	0	0	0	0	0	0	0	8	0	0
Amudat	100	319	5	0	1	0	0	0	0	0	0	0	0	0
Amuria	66.7	2814(2)	0	0	2	1	0	0	0	0	0	0	0	0
Amuru	84.4	3336	16	0	0	0	0	0	0	0	0	2	0	0
Apac	73	4064(1)	1	0	12	0	0	0	0	0	0	0	0	0
Arua	72.6	4691(2)	23	0	6	0	0	0	0	0	0	53	0	0
Budaka	93.8	733	2	0	0	0	0	0	0	0	0	3	0	0
Bududa	100	845	6	0	0	0	0	0	0	0	0	2	0	0
Bugiri	66	2101	10	0	2	0	0	0	2	0	0	20	0	0
Buhweju	76.5	198	0	0	0	0	0	0	0	0	0	0	0	0
Buikwe	54.7	1586	5	0	0	0	0	0	0	0	0	40	0	0
Bukedea	68.8	1463	3	0	0	0	0	0	0	0	0	0	0	0
Bukomansimbi	94.1	1070	6	0	0	0	0	0	1	0	0	13	0	0
Bukwo	100	305	13	0	5	0	0	0	0	0	0	9	0	0
Bulambuli	89.5	817	0	0	0	0	0	0	0	0	0	0	0	0
Buliisa	100	924	6	0	1	0	0	0	0	0	0	16	0	0
Bundibugyo	80	2058(2)	25(1)	0	2	0	0	0	0	0	0	38(2)	0	0
Bushenyi	92.3	2003(1)	4	0	4	0	0	0	1	0	0	61(1)	0	0
Busia	82.8	2609	3	0	1	0	5	0	0	0	0	20	0	0
Butaleja	79.2	1092	22	0	0	0	0	0	0	0	0	6	0	0
Butambala	60.9	816	1	1	0	0	0	0	0	0	0	3	0	0
Buvuma	9.1	48	0	0	0	0	0	0	0	0	0	0	0	0
Buyende	86.4	1683	2	0	0	0	0	0	1	0	0	0	0	0
Dokolo	100	943	4	0	1	0	0	0	4	0	0	8	0	0
Gomba	84.2	1598	0	0	0	0	0	0	0	0	0	1	0	0
Gulu	76.7	9308(1)	53	0	15	0	0	0	0	0	0	44	0	0
Hoima	52.9	4243(5)	35(1)	0	10	0	1	0	6	0	0	51	0	0
Ibanda	72	3131	1	0	3	0	0	0	0	0	0	1	0	0
Iganga	58.9	3571(1)	4	0	2	0	0	0	1	0	0	3	0	0
Isingiro	91.4	4534(1)	7	1	1	0	0	0	0	0	0	44	0	0
Jinja	57.7	3661(4)	14	0	1	0	0	0	0	0	0	10	0	0
Kaabong	88.9	1075	10	0	1	0	0	0	0	0	0	8	0	0
Kabale	78.8	452	0	0	8	0	0	0	0	0	0	0	0	0
Kabarole	67.6	2603(2)	6	0	7	0	0	0	3	0	0	29	0	10
Kaberamaido	80	824	6	0	1	0	0	0	0	0	0	7	0	0
Kalangala	82.4	547	16	0	0	0	0	0	0	0	0	9	0	0
Kaliro	66.7	1110	2	0	0	0	0	0	0	0	0	2	0	0

Kalungu	69	1211	2	0	3	0	0	0	1	0	0	32	0	1
Kampala	27.8	1694	9	1	2	0	0	0	4	0	0	104	0	0
Kamuli	35.6	1853(3)	1	0	6	0	0	0	0	0	0	0	0	0
Kamwenge	67.4	3931(1)	7	0	1	1(1)	0	0	4	0	0	6	0	0
Kanungu	83.3	1034	4	0	3	0	0	0	0	0	0	24	0	0
Kapchorwa	90	715	7	0	0	0	0	0	0	0	0	3	0	0
Kasese	90.5	6407(6)	22	0	6	0	0	0	1	0	0	13	0	0
Katakwi	73.1	1795	1	0	2	0	0	0	0	0	0	4	0	0
Kayunga	50	1522(1)	11	0	1	0	0	0	0	0	0	0	0	0
Kibaale	63.4	3714	7	0	0	0	0	0	7	0	0	91	0	0
Kiboga	73.3	1717	2	0	0	0	0	0	12	0	0	32	0	0
Kibuku	86.7	353	1	0	0	0	0	0	0	0	0	0	0	0
Kiruhura	83.7	3237	0	0	4	0	0	0	2	0	0	19	0	0
Kiryandongo	73.1	1553	4	0	0	0	0	0	2	0	0	1	0	0
Kisoro	89.5	277	3	0	0	0	0	0	0	0	0	5	0	0
Kitgum	64.3	3249	23	0	0	0	0	0	0	0	0	16	0	0
Koboko	100	2172	4	0	0	0	0	0	0	0	0	0	0	0
Kole	100	1005(1)	0	0	0	0	0	0	0	0	0	0	0	0
Kotido	31.6	258	3	0	0	0	0	0	0	0	0	17	0	0
Kumi	63	1787	3	1	1	0	0	0	0	0	0	59	0	0
Kween	62.5	373	2	0	2	0	0	0	0	0	0	7	0	0
Kyankwanzi	80	1942	3	0	0	0	0	0	0	0	0	56	0	0
Kyegegwa	93.3	2656(1)	2	0	0	0	0	0	0	0	0	3	0	0
Kyenjojo	61.7	2233	9	0	2	0	0	0	4	0	0	0	0	0
Lamwo	90.5	2910(2)	10	0	2	0	0	0	0	0	0	0	0	0
Lira	90.6	1661	12	0	0	0	0	0	1	1(1)	0	21	0	0
Luuka	58.1	1272	0	0	0	0	0	0	0	0	0	0	0	0
Luwero	79.7	3236	12	0	2	0	0	0	1	0	0	48	0	0
Lwengo	74.2	2544	8	0	3	0	0	0	0	0	0	27	0	0
Lyantonde	56.7	2089	4	0	2	0	0	0	0	0	0	46	0	0
Manafwa	79.2	749(1)	2	0	2	0	0	0	0	0	0	12	0	0
Maracha	100	1992	5	0	5	0	0	0	0	0	0	7	0	0
Masaka	64.1	1315(1)	3	0	0	0	0	0	0	0	0	4	0	0
Masindi	67.4	2107	9	0	1	0	0	0	1	0	0	8	0	0
Mayuge	56.5	2285	8	0	0	0	0	1	1	0	0	5	0	0
Mbale	72.7	2232	9	0	7	0	42	0	0	0	0	17	0	0
Mbarara	67.6	1218	4	0	7	1	0	0	2	0	0	24	0	0
Mitooma	50	1155	0	0	2	0	0	0	0	0	0	0	0	1
Mityana	54.2	3507(2)	6	0	12	0	0	0	2	0	0	2	0	0
Moroto	40	296	3	0	4	0	0	0	0	0	0	13	0	0
Moyo	100	4181	28	0	5	0	0	0	1	0	0	45	0	0
Mpigi	87.5	1984	5	0	2	0	0	0	0	0	0	23	0	0
Mubende	42.9	4049(2)	6	0	7(1)	0	0	0	4	0	0	65	0	0
Mukono	51	2107	5	0	3	0	0	0	0	0	0	12	0	0
Nakapiripirit	76.5	1340	27	0	0	0	0	0	0	0	0	9	0	0
Nakaseke	83.3	1772	5	0	6	0	0	0	5	0	0	43	0	0
Nakasongola	62.9	1843	12	0	0	0	0	0	1	0	0	1	0	0
Namayingo	65.6	1809	18	0	0	0	0	0	1	0	0	1	0	0
Namutumba	64.7	1383	2	0	1	0	0	0	4	0	0	3	0	0

Napak	78.6	1333	15	0	9	1	0	0	0	0	0	0	0	0
Nebbi	97.7	4832(1)	32	0	5	0	0	0	0	0	0	0	8	0
Ngora	91.7	812	1	0	0	0	0	0	0	1	0	0	1	0
Ntoroko	77.8	201	2	0	1	0	0	0	0	0	0	0	0	0
Ntungamo	40.9	999	0	0	11	0	0	0	0	0	0	0	9	0
Nwoya	77.8	1905	5	0	0	0	0	0	0	0	0	0	0	0
Otuke	66.7	614	3	0	0	0	0	0	0	0	0	0	5	0
Oyam	71	2608(1)	5	0	0	0	0	0	0	0	0	0	0	0
Pader	59	3311	27	0	4	0	0	0	0	0	0	0	1	0
Pallisa	60.6	913	6	0	0	0	0	0	0	0	0	0	10	0
Rakai	56.1	4872	10	0	2	0	0	0	0	2	0	0	22	0
Rubirizi	94.7	1025	1	0	0	0	0	0	0	0	0	0	0	0
Rukungiri	76.4	1546(16)	1	0	5	0	0	0	0	0	0	0	3	0
Sembabule	100	3739	7	0	2	0	0	0	0	0	0	0	94	0
Serere	95.2	1606	10	2	1	0	0	0	0	0	0	0	4	0
Sheema	85.3	1295	0	0	3	0	0	0	0	0	0	0	2	0
Sironko	80	1857	4	0	2	0	0	0	0	1	0	0	0	0
Soroti	63.9	2799	9	0	3	0	0	0	0	1	0	0	12	0
Tororo	79.2	1635	8	0	6	0	0	0	1	0	0	0	15	0
Wakiso	42.8	3855	13(1)	0	0	0	0	0	6	0	0	0	42	0
Yumbe	100	2313(1)	13	0	5	0	0	0	0	0	0	0	13	0
Zombo	100	1881	15	0	1	0	0	0	1	0	0	0	2	0

**Key:** Yellow: 100% reporting, Green: 80-99% reporting, Red: Below 80% reporting

HU= Health Units, AFP=Acute Flaccid Paralysis, NNT=Neonatal Tetanus, NR =Not Reported

**Compiled by the Epidemiological Surveillance Division, Ministry of Health**